

G7長野県・軽井沢交通大臣会合 展示会に出展しました

平成 28 年 9 月 23 日（金）から 25 日（日）に開催された「G7長野県・軽井沢交通大臣会合 展示会」に出展いたしました。

当展示会では、「大規模災害等の発生時に備えて」、「ICTを活用した点検等の効率化・高度化」、「東日本大震災復興への取り組み」の3つのテーマについての取り組みを展示しました。

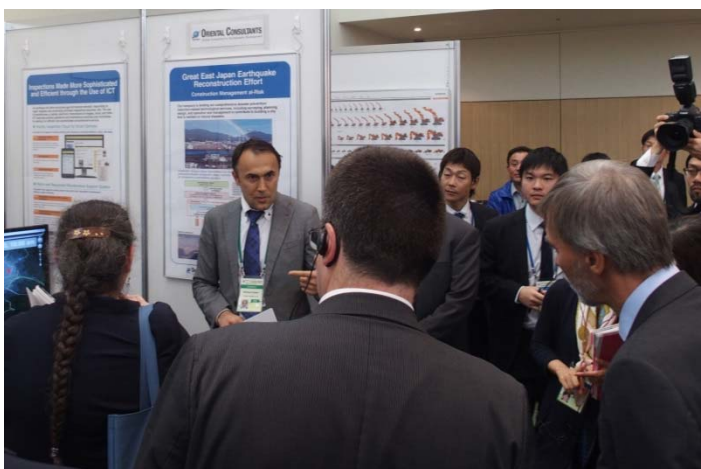
「大規模災害等の発生時に備えて」のテーマでは、災害時に、気象データ、プローブデータ、被災地画像などの情報を融合し、道路交通情報や災害状況をリアルタイムにモニタリング、情報提供する「リアルタイムモニタリングシステム」を、また、災害時の避難行動をモデル化し、道路インフラや交通規制等の支援策を評価するための「避難支援策の設計・評価システム」を紹介しました。

また、「ICT 技術を活用した点検等の効率化・高度化」のテーマでは、スマートフォンやタブレットを用いて、調査現場で入力したインフラ施設の点検・診断結果を事務所に転送し、既定の様式に自動で取りまとめることで日々の要望管理や巡回パトロールの効率化・迅速化・省力化を図るツールを紹介しました。

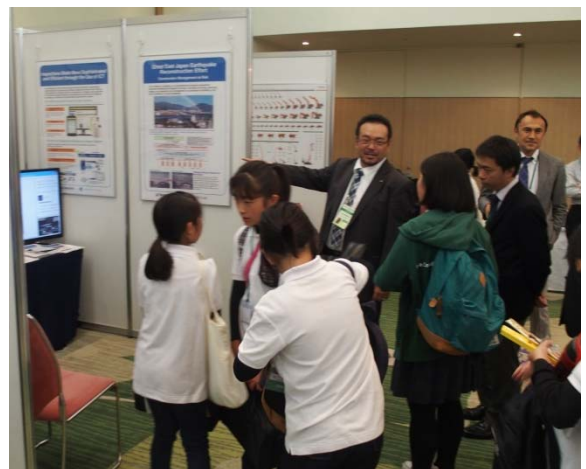
さらに、「東日本大震災復興への取り組み」のテーマでは、東日本大震災復興工事の施工に係る調整、設計や施工方法の提案、施工に関するマネジメントを行政の代行として実施し、発注者の負担を軽減する「アットリスク型 CMR」を紹介いたしました。

当社は今後も、防災やインフラ保全に関する調査、研究を進め、社会に貢献してまいります。

名 称 : G7長野県・軽井沢交通大臣会合 展示会
主 催 : 国土交通省
開 催 日 : 平成 28 年 9 月 23 日（金）から 25 日（日）
会 場 : 軽井沢プリンスホテルウエストメインバンケットホール長野（楓）
〒389-0193 長野県北佐久郡軽井沢町軽井沢



展示会場での交通大臣への説明の様子



展示会場の様子

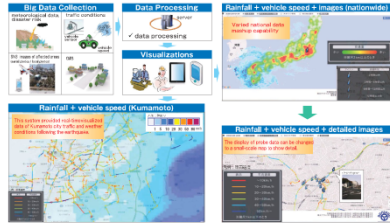
In Preparation for Large-Scale Disasters

Real-time monitoring system

The system integrating meteorological and probe data and images of affected areas was developed to monitor and provide information about traffic and disaster conditions.

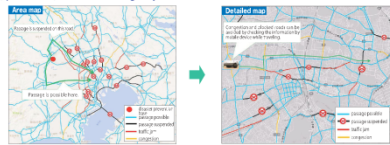
● Outline of Real-Time Monitoring System

- Traffic condition data, rainfall/snowfall/other meteorological data, images of damaged areas, and other data is visualized and transmitted to PCs, smartphones, car navigation systems, etc. nationwide.
- Landslide, flooding, and information about other disaster risks can also be provided.
- Part of the data was made available to the general public online and was accessed by those affected by the Kumamoto earthquake.



● Utilizing the System to Select the Best Route for Providing Disaster Relief

- Traffic conditions, blocked roads, and meteorological information from probe data at the time of a large-scale disaster is provided to mobile devices.
- Using this data, the most efficient routes can be selected for deploying medical, search and rescue, troops, provisions, and other emergency relief.



ORIENTAL CONSULTANTS
Global Consulting for Sustainable Development

ACKG Ltd.
ACKG

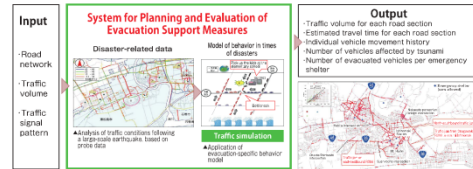
In Preparation for Large-Scale Disasters

System for planning and evaluation of evacuation support measures

An emergency evacuation modeling system was developed to evaluate support measures for road infrastructure and regulations.

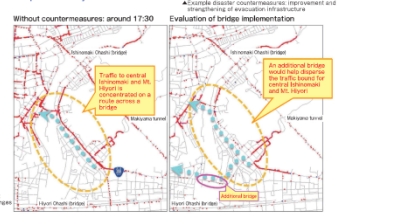
● Outline of System for Planning and Evaluation of Evacuation Support Measures (Case Study: Ishinomaki City)

- (1) Reproduction of emergency traffic conditions at the time of the tsunami in Ishinomaki
- Probe data from the day of the Great East Japan earthquake was analyzed, questionnaires were administered to evacuees, and a model of the traffic behavior during the evacuation was developed.
 - Functions that display behavior during the evacuation were implemented into the traffic simulation.



(2) Evaluation of effectiveness of Ishinomaki tsunami evacuation support measures

- Support measures for road infrastructure and traffic regulation to mitigate congestion due to heavy inbound traffic were examined and their effectiveness was quantitatively assessed.



ORIENTAL CONSULTANTS
Global Consulting for Sustainable Development

ACKG Ltd.
ACKG

Inspections Made More Sophisticated and Efficient through the Use of ICT

As buildings and other structures age and become decrepit, responding to repair requests and conducting premises inspections becomes vital. The use of smartphones or tablets, electronic transmission of images, cloud, and other ICT improves existing operations and maintenance practices and contributes to making it an efficient and sophisticated comprehensive service.

● Facility Inspection Cloud for Smart Devices

A system that supports making existing site inspection practices efficient, quick, and easy

Point 1. Reduction in manual procedures

Procedures previously performed manually upon return from the inspection site are made automatic. The burden of report writing is lessened.

Point 2. Time reduction

Site inspection results can be reported almost in real time.

Point 3. Quality Improvement

Inspection records are changed to a standardized checklist format, which prevents oversight.



● Patrol and Requested Maintenance Support System

A system that supports making day-to-day patrol and requested maintenance efficient, quick, and easy.

Point 1. Consolidation of repair and other request management

Users and the troops can register their requests by PC or smartphone. Progress of the response can be managed via data server in the cloud.

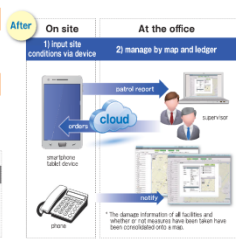
Point 2. Easy inspections and sophisticated operation and maintenance

Consolidation of records, location information, and photos of deformation of facilities confirmed by daily patrols makes reporting easier. Accumulation of data of deformation contributes to the formulation of maintenance and operation plans.

Before

1) paper records
2) transfer site condition data to PC
3) manage by ledger

digital camera, ledger, smartphone, PC for managing, server, user view



ORIENTAL CONSULTANTS
Global Consulting for Sustainable Development

Research & Solution

Great East Japan Earthquake Reconstruction Effort

Construction Management at-Risk

Our company is lending our comprehensive disaster prevention/reduction-related technological services, including surveying, planning, design, and operation and management to contribute to building a city that is resilient to natural disasters.



Construction managers relieve responsibilities from their clients, by providing services including construction schedule management, design, contracts, management, and supervision, (ie: consignment of administrative operation)



Bringing Rikuzen Takata into the future!

Five years have passed since the Great East Japan earthquake. We have been involved with the reconstruction since its early stages, in order to return the city to its previous prosperity. We are implementing a plan that seeks to play a part in the preservation of Rikuzen Takata's cultural inheritance.

ORIENTAL CONSULTANTS
Global Consulting for Sustainable Development

ACKG Ltd.
ACKG

以上

<本資料に関するお問い合わせ先>

株式会社オリエンタルコンサルタンツ

TEL: 03-6311-7551 FAX: 03-6311-8011

URL: <http://www.oriconsul.com/>

統括本部 藪内、伊藤